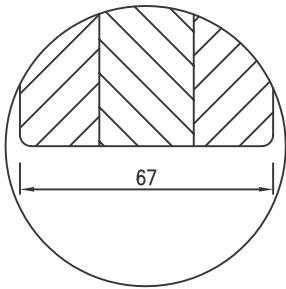
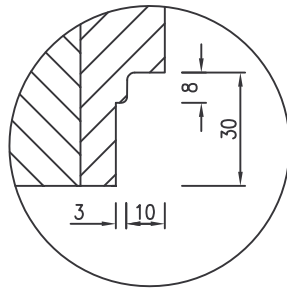


Schnitte Falzgestaltung Rahmen

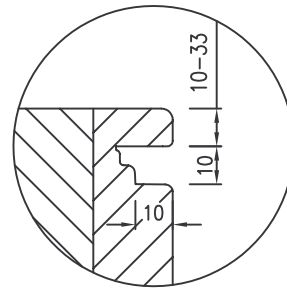
Coupe dormant



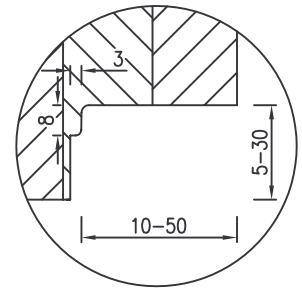
070.000
Vollkant



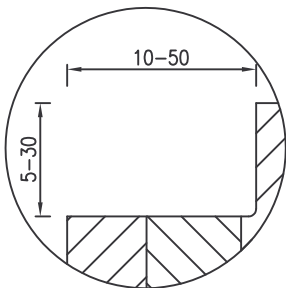
070.001
Fensterbankfalz
raumseitig



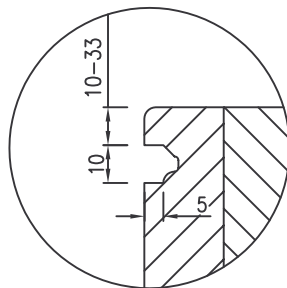
070.002
Nut raumseitig



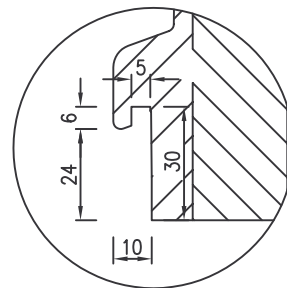
070.003
Variabler Falz
raumseitig



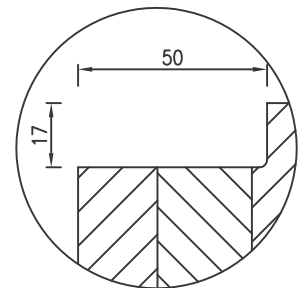
070.010
Variabler Falz
wetterseitig



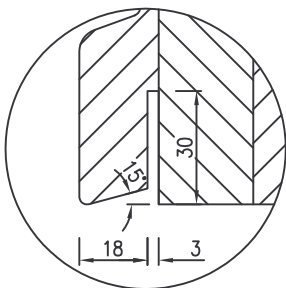
070.020
Nut wetterseitig



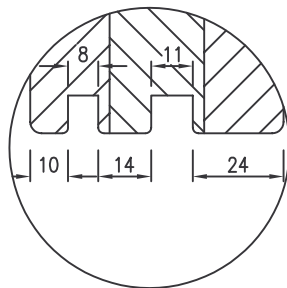
070.030
Fensterbankfalz
wetterseitig



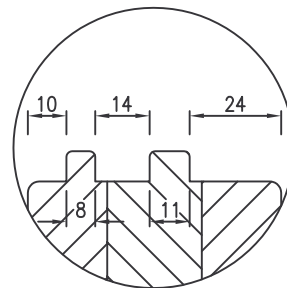
070.050
Renofalz
wetterseitig



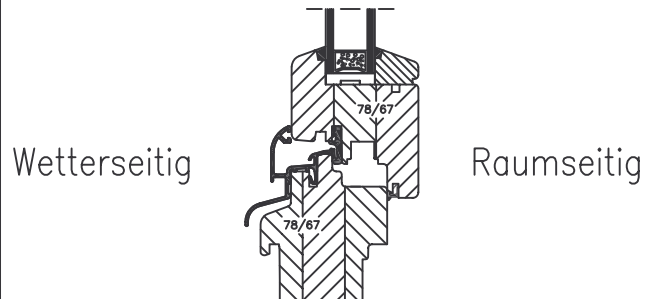
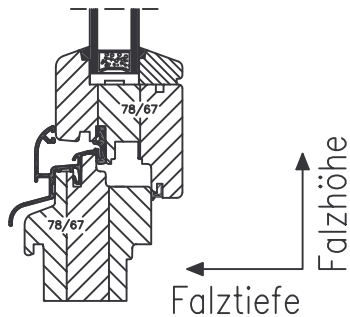
070.060
Sohlbanknut
wetterseitig



070.100
Doppelnut



070.400
Doppelfeder



Tryba Bernsdorfer GmbH
Güterbahnhofstr. 48
01917 Kamenz

Zeichnungsname

TB67-FG 05.0001

Datum gez.
02.01.08 SCHULZE

Maßstab
1:2